



**ISCCE 2024**

**International Students Conference of Civil Engineering  
Prishtina 2024**

Organized by:

Faculty of Civil Engineering, University of Prishtina "Hasan Prishtina"  
Faculty of Civil Engineering, Polytechnic University of Tirana

# **ISCCE 2024**

# **REPORT**

**APRIL 25 - 27, 2024**



## Summary report of the International Student Conference of Civil Engineering - ISCCE 2024

The second international student conference of civil engineering ISCCE 2024 was held in Prishtina on 25 – 27 April 2024 marking the beginning of an event dedicated to exploring the frontiers of engineering innovation. The conference was organized by the Faculty of Civil Engineering - University of Prishtina “Hasan Prishtina” and the Faculty of Civil Engineering - Polytechnic University of Tirana, where it aimed to bring together students, engineers, researchers, industry leaders and enthusiasts from around the world to exchange ideas, share knowledge and encourage cooperation in the field of engineering. The opening ceremony of the conference started with an inspiring speech by the Dean of the Faculty of Civil Engineering from the University of Prishtina, Prof. Ass. Dr. Florim Grajçevci. The work of this conference was also supported by the Rector from the University of Prishtina, Prof. Dr. Qerim Qerimi, as well as the Rector of the Polytechnic University of Tirana, Prof. Dr. Andrea Maliqari. The opening ceremony was concluded by Prof. Dr. Neritan Shkodrani, Dean of the Faculty of Civil Engineering from the Polytechnic University of Tirana.

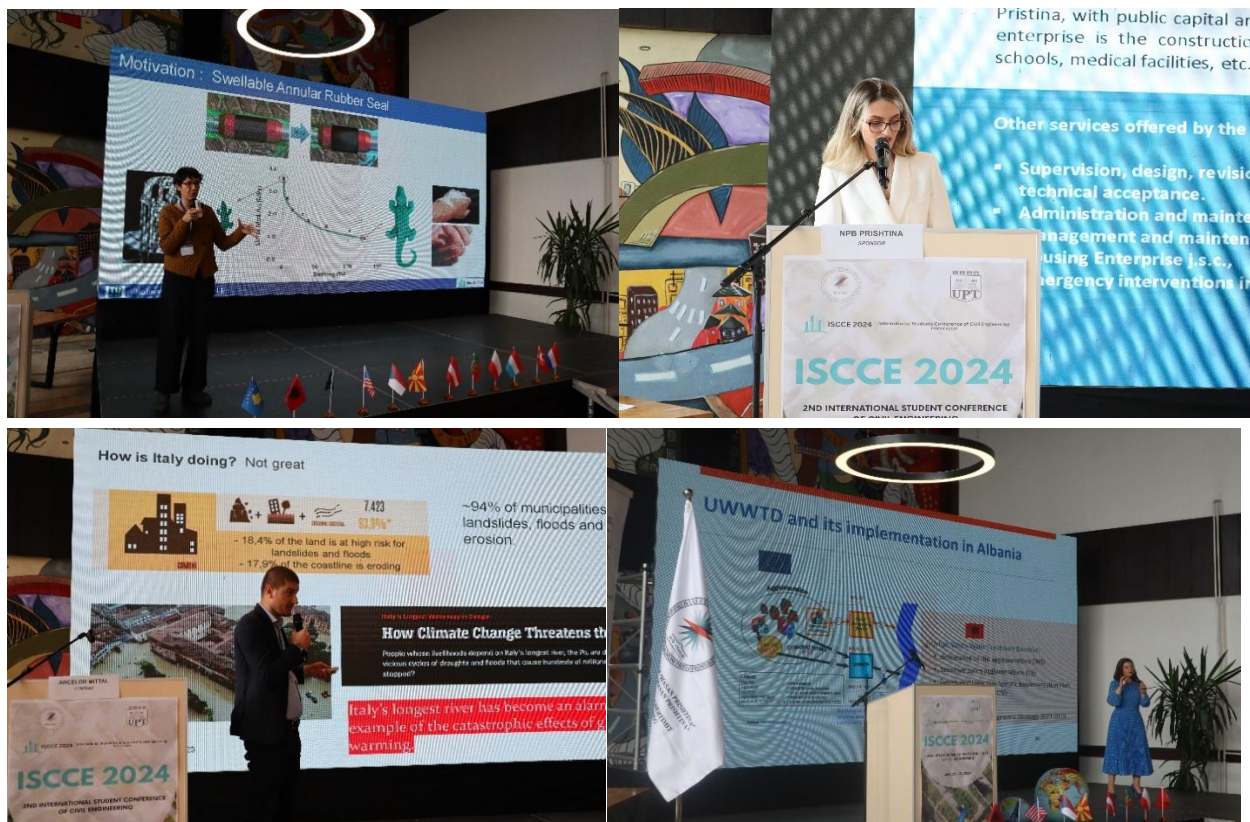


*Figure 1. Photos taken during the first day of the conference*





The first day was dedicated to keynote speakers, distinguished professors from all over the world. Part of this plenary session were Prof. Alper Ilki from Istanbul Technical University, who addressed the topic *"Seismic Retrofit: Technical and Economic Aspects in the Light of 2023 Turkey Earthquakes and Scenario Studies Conducted for Istanbul"*, Prof. Karel Pavelka from the Czech Technical University in Prague with the topic *"New possibilities for object documentation with hand-held mobile laser scanning"*, Prof. Enkelejda Gjinali from the Polytechnic University of Tirana who presented *"Flowing Towards Tomorrow: Unveiling the Water Wisdom of European Integration and a Sustainable Future"*, and Prof. Agathe Robisson from the Technical University of Vienna who addressed the topic *"Reactive cementitious rubber composites for high-pressure water seals: From a basic idea to a commercialized product - Technical and personal perspectives"*. A special session on the first day of the conference were the presentations of the sponsors; NPB Prishtina, ANGST & FARO, S.W.O.T, Arcelor Mittal and others sharing their work experience and market opportunities. Part of the interactive sessions were the presentations of the posters, which were exhibited throughout the conference. The first day of the conference concluded with the Gala Dinner held at the Venus Hotel, in Prishtina.



*Figure 2. Photos taken during the first day of the conference - Keynote and Sponsor presentations*



The sessions of the second day began with the presentation of Prof. Klaudia Borowiak from the University of Life Sciences in Poznan with the topic *"Rare means important - the story of research on rare earth elements in the environment of urban areas"*, followed by Prof. Kemal Edip from Ss. Cyril and Methodius University in Skopje with the topic *"Advanced numerical simulations of geotechnical challenges"*.

Part of the conference during the second day was also the ceremony of the distribution of scholarships to the students of the Faculty from the "Nexhmedin Kusari - Daka" foundation, as well as the presentation from the vocational school of Civil Engineering "Karl Gega" from Tirana. Keynote presentations continued during the afternoon session, with the presentation of the PhD. Cand. Monica Santamaria Ariza with the topic *"Applying concepts of Reliability, Risk, and Resilience in the Management of Civil Infrastructures"*. A summary of the keynote speakers' presentations is presented in the table below.

*Table 1. Details of Keynote speakers' presentations at ISCCE 2024*

No.	Keynote	University	Presentation Topic
1	Alper Ilki	Istanbul Technical University	Seismic Retrofit: Technical and Economic Aspects in the Light of 2023 Türkiye Earthquakes and Scenario Studies Conducted for Istanbul
2	Karel Pavelka	Czech Technical University in Prague	New possibilities for object documentation with hand-held mobile laser scanning
3	Enkelejda Gjinali	Polytechnic University of Tirana	Flowing Towards Tomorrow: Unveiling the Water Wisdom of European Integration and a Sustainable Future
4	Agathe Robisson	Technical University of Vienna	Reactive cementitious rubber composites for high-pressure water seals: From a basic idea to a commercialized product – Technical and personal perspectives
5	Klaudia Borowiak	Poznan University of Life Sciences	Rare means important - the story of research on rare earth elements in the environment of urban areas
6	Kemal Edip	Ss. Cyril and Methodius University, Skopje	Advanced numerical simulations of geotechnical challenges
7	Monica Santamaria Ariza	University of Minho	Applying concepts of Reliability, Risk, and Resilience in the Management of Civil Infrastructures

After the plenary sessions, the conference continued with 4 parallel sessions. The sessions were classified into four groups:



- The first session with the topics of ***Structural and Earthquake Engineering and Transport Engineering/ Computational Methods in Civil Engineering***;
- The second session with the topics ***Construction Materials/Geotechnical Engineering/Construction Technology and Management***;
- The third session with the topics Geodesy, Cartography, Photogrammetry, RS and Geo-Information and NSDI/Historical and Monumental Buildings/Hydraulic and Coastal Engineering/Hydrology, Flooding and Resource Management; and
- The fourth session with the topics ***Environmental Quality and Management/Climate Change Adaptation and Mitigation/Efficiency and Renewable Energy/Water and Wastewater Treatment***.

After the end of the sessions, the closing ceremony of the ISCCE 2024 conference took place, with speeches by the two host deans of the conference as well as the head of the conference secretariat. During the closing, gratitude was again expressed to the presenters, moderators, sponsors and all the participants and collaborators who contributed to the success of this conference, and especially the contribution of the students, support staff and the organizing committee was highlighted. The conference ended with the invitation and call for participation in the next edition of the conference to be held in Tirana. The second day of the student conference ended with the student party in the Amphitheater of Gërmia.



**Figure 3.** Photos taken during the second day of the conference





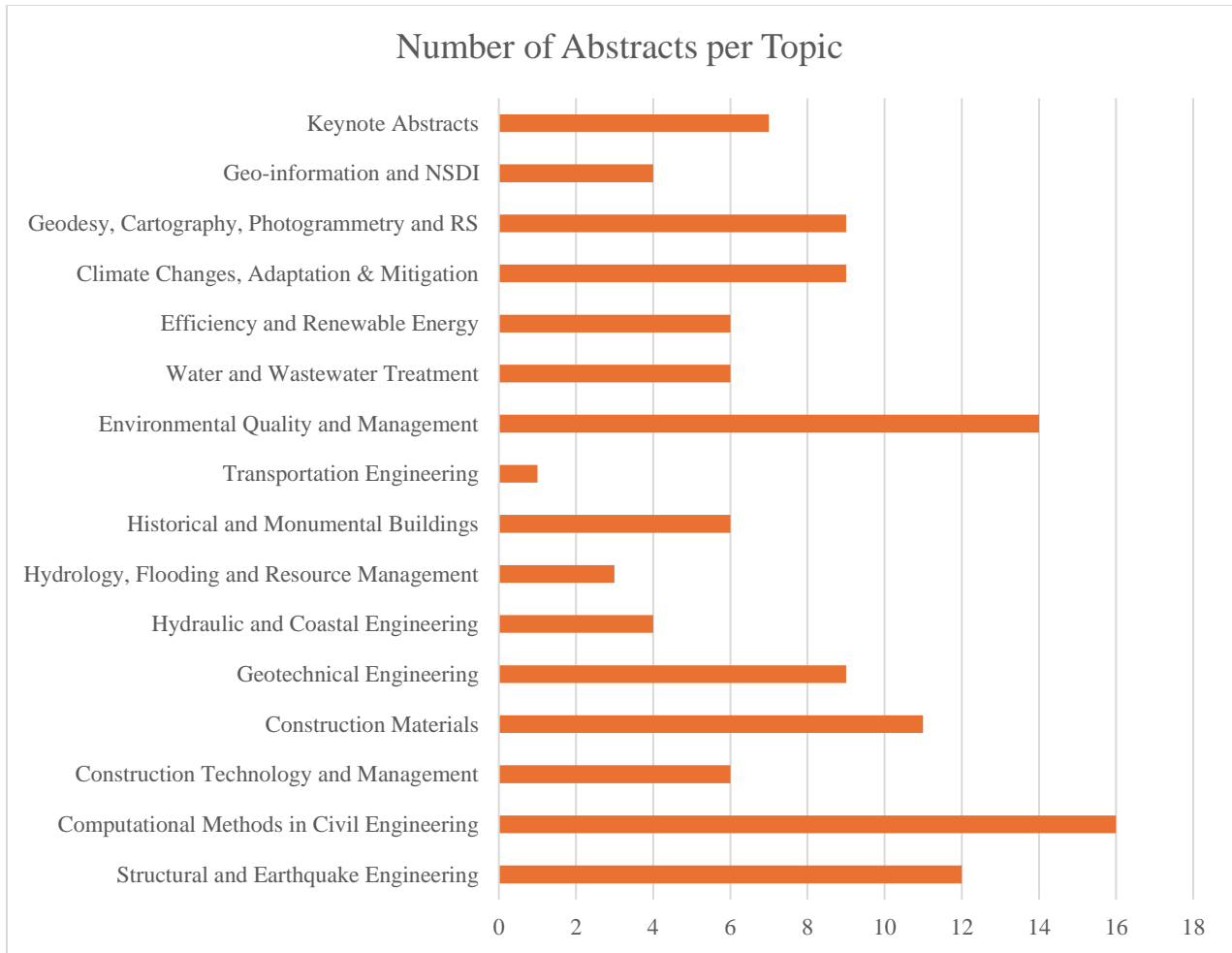
The third day of the conference was dedicated to visiting the city of Prizren, and exploring the historical and cultural heritage of the city. First, the Castle of Prizren was visited, where the participants of the conference had the opportunity to see the wonderful panoramic view of the old city and the “Lidhja e Prizrenit” museum.



*Figure 4. Photos developed during the third day of the conference - social activity in Prizren*

Part of the contributions of the Conference were 123 abstracts, 81 full papers, over 20 papers with posters and over 40 oral presentations, including 2 virtual - online presentations. The number of participants registered at the conference was 360.

The conference was divided into 15 topics, and the number of papers for each topic is given in the chart below.

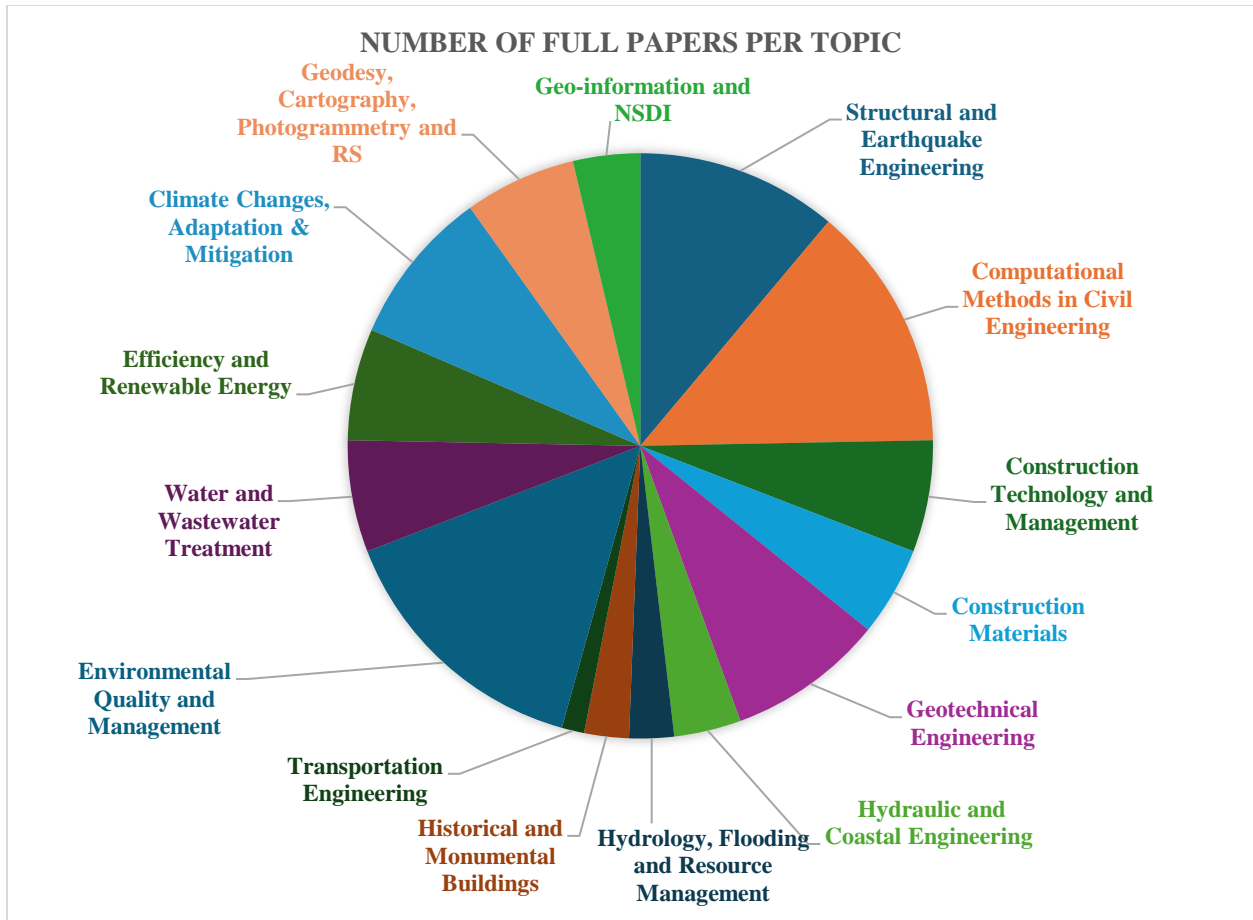


**Figure 5.** Classification of submitted abstracts by ISCCE 2024 topics

Of all these abstracts, 56 were from the University of Prishtina "Hasan Prishtina", 38 from the Polytechnic University of Tirana, while the others were from the University of Trento, the University of Stuttgart, the Technical University of Vienna, the Czech Technical University in Prague, the Technical University of Istanbul, Epoka University, and some private companies.

Out of 81 full papers, 59 were presented orally during the conference (2 of them online), while another 22 were presented via poster. 37 papers were from the University of Prishtina "Hasan Prishtina", 32 from the Polytechnic University of Tirana, and the others from the University of Trento, the University of Stuttgart, the Technical University of Vienna, the Czech Technical University in Prague, the Technical University of Istanbul, Epoka University, and some private companies.

The classification of full papers, according to topics, is shown in the chart below.



*Figure 6. Classification of full papers sent according to ISCCE 2024 topics*

All abstracts sent by students and staff of the Faculty of Civil Engineering, University of Prishtina "Hasan Prishtina" are attached in the table below.

*Table 2. Abstracts submitted by UP students and staff to ISCCE 2024*

No.	Topic	Author	Title of Abstract
1	ISCCE_SEE001	Granit Limani, <b>Armend Mujaj</b> , Valon Veseli	The behavior of flat slabs reinforced concrete structures with different floors, in seismic areas
2	ISCCE_SEE002	Hetem Bimbashi, <b>Armend Mujaj</b> , Guxim Veseli	The structural analysis of the frame and dual systems, a case study of the 10-story structure designed based on capacity
3	ISCCE_SEE003	<b>Ylli Murati</b> , <b>Armend Mujaj</b> , Enes Krasniqi	Analysis of Structure Response in the Case of Superstructures Case Study: Superstructure of the Technical Faculties Building
4	ISCCE_SEE004	Altina Grajçevci, <b>Armend Mujaj</b> , Labeat Misini	Designing cylindrical silos according to "Eurocode" European standards





5	ISCCE_SEE005	Dren Tahiri, <b>Armend Mujaj</b> , <b>Ilir Canaj</b>	Effect of reducing the vertical stiffens of the seismic walls and their retrofit on the Highrise Building of 24 story
6	ISCCE_EQM002	Faze Ukaj	Optimising existing municipal waste management systems: a case study of Deçan
7	ISCCE_GNSDI001	Dardan Muzaqi, Agon Nimani, <b>Bashkim Idrizi</b>	Utilization of the QGIS Platform with OSGEO for Publishing and Analyzing Geospatial Data of River and Road Networks in the Municipality of Vushtrri
8	ISCCE_CM002	Atdhe Haxhimusa, Vjollca Veseli	"Experimental Analysis of the Structural and Environmental Dynamics of Partial Replacement of Cement with Glass Powder in Concrete"
9	ISCCE_CMCE001	Laur Haxhiu, Mirela Balaj, Endrit Vuniqi	Analysis of Cold-Formed Sections Elements under compression loads: Conventional methods vs Finite Element Approach
10	ISCCE_CTM001	Laur Haxhiu, Agon Shaini, Laurit Hafizi, Afrim Idrizi	Comparative Cost Analysis of Warehouse Construction Using Different Structural Materials
11	ISCCE_CM003	Kledia Mehmeti	Alkali Silica Reaction and its Impact on the Durability of Concrete
12	ISCCE_HCE002	Argjenda Shala, Bulza Lika, Melisa Fetahaj, Oltion Marko	Application of the Erosion Potential Method in Lumbardhi i Deçanit Watershed
13	ISCCE_CMCE002	Albin Shehu, Alban Kadiri, Blendi Krasniqi, Mergim Lajqi	Assessing the Load-Bearing Capacity of Frame Systems and increasing it through the application of FRP Techniques
14	ISCCE_CMCE003	Fatlind Musa, <b>Armend Mujaj</b> , Albin Shehu, Mergim Lajqi	Comparative Analysis of Displacement in Dual Systems with Shear Walls: Utilizing Finite Element Method, Software's, and Approximate Expression
15	ISCCE_WWT002	Elita Ferati	Energy Production Through Treating Wastewater
16	ISCCE_WWT003	Alketa Bislimi, Marigona Xhini	Impact of Antibiotics in Wastewater Treatment Plants and Optimal Configurations for Kosovo
17	ISCCE_EQM003	Donjeta Shabani	Optimizing Waste Management in Gjilan Municipality: Challenges and Solutions
18	ISCCE_EQM004	Donjeta Shabani	Navigating Environmental Legislation: A Comparative Analysis of Kosovo and Turkey
19	ISCCE_EQM005	Fjosa Sadikaj	Enhancing Municipal Solid Waste Management: A Case Study of Istog Municipality, Kosovo



20	ISCCE_CMCE005	Bajram Sejdiu, Elsa Alaj, Egzon Morina, Ilirian Haskaj	Advanced Modeling Techniques in Structural Analysis using Finite Element Method
21	ISCCE_EQM007	Hana Puka, <b>Vlerë Krasniqi</b>	Towards Sustainable Waste Management: Challenges, Solutions and Priorities for the Municipality of Prishtina
22	ISCCE_GNSDI002	Agon Nimani, Dardan Muzaqi, <b>Bashkim Idrizi</b>	Potential flood-prone areas identification and mapping using GIS-based multi-criteria decision making and analytical hierarchy process for the territory of Kosovo
23	ISCCE_WWT004	Argjenda Berisha, Rigona Gallapeni, Eglantina Kurtishaj, Elda Bacaj	Advancements in Wastewater Treatment: A Comprehensive Analysis of Technological Processes and Industrial Practices
24	ISCCE_CMCE006	Alketa Ahmetaj, Vaid Kryeziu, Miftar Alimusaj, Blendi Krasniqi	Optimization of Dimensional Parameters for Structural Elements in Frame Systems
25	ISCCE_GCPRS005	Jonida Rafuna, Aroma Sylhasi, <b>Ymer Kuka</b>	Creation of a tourist map using GIS applications for the municipality of Gjakova
26	ISCCE_CMCE008	Ardijan Shala, Dritan Lajci, Mensur Pali, Alban Kadiri	Analysis of vertical structural elements for varying class of ductility in Dual Systems with Shear Walls: Utilizing seismic design standards, specifically Eurocode 8
27	ISCCE_GCPRS006	Aroma Sylhasi, Jonida Rafuna, <b>Ymer Kuka</b>	Land coverage and the changes occurred between years 2006 and 2018 - case study Gjakova Municipality
28	ISCCE_CCAM005	Argjenda Shala, Bulza Lika, Melisa Fetahaj	Climate Change: Effects, Contributors and Actions Taken - Case Studies of Kosovo and Japan
29	ISCCE_HFRM001	Dorea Deda	Water Management Systems: State of Water, Challenges and Usage in Kosovo
30	ISCCE_CCAM006	Dorea Deda	Climate Change Effects, Contributors and Measures: A Case Study of India and Kosovo
31	ISCCE_GNSDI003	Çlirim Podvorica, <b>Bashkim Idrizi</b>	Developing and usage of Mobile GIS Applications
32	ISCCE_CM008	Ard Piraj, Sadik Veseli	Improvement of the properties of concrete with fibers addition
33	ISCCE_CCAM008	Lis Bytyqi	Climate Change: Effects, Contributors and Actions Taken - Case Studies of Kosovo and Germany
34	ISCCE_CMCE009	Arta Ramadani, Bardha Isufi	Potential of Double Skin Façades
35	ISCCE_ERE006	Alketa Suka, Gongje Luzhnica	Integration of Renewable Energy in Urban Environments
36	ISCCE_GCPRS008	<b>Festina Sadiku</b>	Visualization of Landscape Changes in a 3D Environment Using the Storytelling Approach



37	ISCCE_GE001	Ndalesa Hoti, <b>Guxim Rrudhani</b>	Enhancing Dam Protection and Stability through Optimized Construction Material Selection in Geotechnical Context.
38	ISCCE_CMCE011	Mirela Balaj, Laur Haxhiu, <b>Vlora Shatri, Bajram Shefkiu</b>	An analysis of (group and individual) Tensioning Techniques in Posttensioned Concrete, Mechanical Insights and Practical Implications
39	ISCCE_HMB004	Dafina Balaj, Era Tytyri, Tringa Rama	History of Architecture Renaissance to Modern, British Museum London by Robert Smirke
40	ISCCE_CMCE012	Mirela Balaj, <b>Armend Mujaj</b> , Elsa Alaj, Laur Haxhiu	Comparative Assessment of Glulam Design Methodologies: Finite Element Analysis, Software Tools, and Approximate Formulations
41	ISCCE_CMCE013	Elsa Alaj, Mirela Balaj, Erona Berisha, Plator Kryeziu	Membrane and Bending Behavior of Plates and Shells using FEM approach focusing on Form Finding Concept
42	ISCCE_HFRM002	Elita Ferati, Qëndresa Berisha	Hydrological modeling of the Fersina River
43	ISCCE_CMCE014	Fisnik Tërshana, Arbëresha Kabashaj	INFLUENCE OF MOISTURE CONTENT ON PHYSICAL AND MECHANICAL PROPERTIES OF WOOD IN CONSTRUCTIONS
44	ISCCE_SEE007	Egzon Ahmaxhekaj, <b>Armend Mujaj, Anita Gjukaj</b>	Different additional effects appearing from the structural construction stage.
45	ISCCE_CM010	Rina Haxhijaj, Laurant Mustafa, Fisnik Tërshana	Workability Assessment Methods in Beltic Calcium Sulfoaluminate Concrete Mixtures
46	ISCCE_GCPRS009	Ilir Heta, <b>Bashkim Idrizi</b>	Automatic transformation of map projection with QGIS. Case study: RKS's borders in different Map Projections
47	ISCCE_HMB005	Adriana Hamzoviç, Blendiona Bytyqi	ARCHITECTURE OF RESTAURANTS AND CAFES IN PRISTINA
48	ISCCE_HMB006	Besianë Kastrati, Natyra Krasniqi, Nora Spahiu, Riga Isufi	History of Architecture Renaissance to Modern, Baroque in Austria, XVIII century – Lucas Von Hildebrandt, Belvedere Palace, Vienna
49	ISCCE_GNSDI004	Endrit Krasniqi	Building a database in GeoServer in function of creating a Webmap
50	ISCCE_SEE010	Elton Aliu, Albion Sylaj, <b>Valon Veseli</b>	Program of Works for the multi-store Building B+P+5, method used: Gant Chart and Pert Chart
51	ISCCE_EQM013	Eda Krasniqi	Formaldehyde as an Indoor Pollutant: Origins, Impacts, and Remedial Strategies. A case study of Kosovo





52	ISCCE_SEE011	Butrint Kryeziu, <b>Armend Mujaj</b> , Alban Demiraj, Arton Demiraj	Experimental and Theoretical Investigation into the Behavior of a Reinforced Concrete Beam with Conventional Steel Bars
53	ISCCE_GE007	Laurant Mustafa, Fisnik Tërshana, Rina Haxhiaj, Ermir Kurtaj	Compaction of Cohesive and Granular Soils
54	ISCCE_EQM014	Delvina Çollaku	Tackling Indoor Air Pollution in Kosovo: Sources, Impacts, and Mitigation Strategies for Lead
55	ISCCE_GE009	Arda Karaq, Bledar Morina, Era Bërdynaj, Arianit Bricori, Albesa Bajraktari	Structural and Earthquake Engineering
56	ISCCE_CTM006	Yllka Binaku, Arbër Binaku, <b>Esat Gashi</b>	Time Programming and Cost Control in Construction Projects

All Full Papers sent by students and staff of the Faculty of Civil Engineering, University of Prishtina "Hasan Prishtina" are attached in the table below.

*Table 3. Full papers submitted by FCE-UP students and staff to ISCCE 2024*

No.	Topic	Author	Title of Paper
1	ISCCE_SEE001	Granit Limani, <b>Armend Mujaj</b> , <b>Valon Veseli</b>	The behavior of flat slabs reinforced concrete structures with different floors, in seismic areas
2	ISCCE_SEE003	<b>Ylli Murati</b> , <b>Armend Mujaj</b> , <b>Enes Krasniqi</b>	Analysis of Structure Response in the Case of Superstructures Case Study: Superstructure of the Technical Faculties Building
3	ISCCE_SEE004	Altina Grajcevc, <b>Armend Mujaj</b> , <b>Labeat Misini</b>	Designing cylindrical silos according to "Eurocode" European standards
4	ISCCE_EQM002	Faze Ukaj	Optimizing existing municipal waste management systems: a case study of Deçan
5	ISCCE_GNSDI001	Dardan Muzaqi , Agon Nimani, <b>Bashkim Idrizi</b>	Utilization of the QGIS Platform with OSGEO for Publishing and Analyzing Geospatial Data of River and Road Networks in the Municipality of Vushtrri
6	ISCCE_CM002	Atdhe Haxhimusa, Vjollca Veseli	"Experimental Analysis of the Structural and Environmental Dynamics of Partial Replacement of Cement with Glass Powder in Concrete"
7	ISCCE_CMCE001	Laur Haxhiu, Mirela Balaj, Endrit Vuniqi	Analysis of Cold-Formed Sections Elements under compression loads: Conventional methods vs Finite Element Approach
8	ISCCE_CM003	Kledia Mehmeti	Alkali Silica Reaction and its Impact on the Durability of Concrete



9	ISCCE_HCE002	Argjenda Shala, Bulza Lika, Melisa Fetahaj, Oltion Marko	Application of the Erosion Potential Method in Lumbardhi i Deçanit Watershed
10	ISCCE_CMCE002	Albin Shehu, Alban Kadiri, Blendi Krasniqi, Mergim Lajqi	Assessing the Load-Bearing Capacity of Frame Systems and increasing it through the application of FRP Techniques
11	ISCCE_CMCE003	Fatlind Musa, Armend Mujaj, Albin Shehu, Mergim Lajqi	Comparative Analysis of Displacement in Dual Systems with Shear Walls: Utilizing Finite Element Method, Software's, and Approximate Expression
12	ISCCE_WWT002	Elita Ferati	Energy Production Through Treating Wastewater
13	ISCCE_EQM004	Donjeta Shabani	Navigating Environmental Legislation: A Comparative Analysis of Kosovo and Turkey
14	ISCCE_CMCE005	Bajram Sejdiu, Elsa Alaj, Egzon Morina, Ilirian Haskaj	Advanced Modeling Techniques in Structural Analysis using Finite Element Method
15	ISCCE_EQM007	Hana Puka, <b>Vlerë Krasniqi</b>	Towards Sustainable Waste Management: Challenges, Solutions and Priorities for the Municipality of Prishtina
16	ISCCE_GNSDI002	Agon Nimani, Dardan Muzaqi, <b>Bashkim Idrizi</b>	Potential flood-prone areas identification and mapping using GIS-based multi-criteria decision making and analytical hierarchy process for the territory of Kosovo
17	ISCCE_CMCE006	Alketa Ahmetaj, Vaid Kryeziu, Miftar Alimusaj, Blendi Krasniqi	Optimization of Dimensional Parameters for Structural Elements in Frame Systems
18	ISCCE_GCPRS005	Jonida Rafuna, Aroma Sylhasi, <b>Ymer Kuka</b>	Creation of a tourist map using GIS applications for the municipality of Gjakova
19	ISCCE_CMCE008	Ardijan Shala, Dritan Lajci, Mensur Pali, Alban Kadiri	Analysis of vertical structural elements for varying class of ductility in Dual Systems with Shear Walls: Utilizing seismic design standards, specifically Eurocode 8
20	ISCCE_GCPRS006	Aroma Sylhasi, Jonida Rafuna, <b>Ymer Kuka</b>	Land coverage and the changes occurred between years 2006 and 2018 - case study Gjakova Municipality
21	ISCCE_CCAM006	Dorea Deda	Climate Change Effects, Contributors and Measures: A Case Study of India and Kosovo
22	ISCCE_GNSDI003	Çlirim Podvorica, <b>Bashkim Idrizi</b>	Developing and usage of Mobile GIS Applications
23	ISCCE_CM008	Ard Piraj, Sadik Veseli	Improvement of the properties of concrete with fibers addition
24	ISCCE_CCAM008	Lis Bytyqi	Climate Change: Effects, Contributors and Actions Taken - Case Studies of Kosovo and Germany
25	ISCCE_ERE006	Alketa Suka, Gongje Luzhnica	Integration of Renewable Energy in Urban Environments
26	ISCCE_GE001	Ndalesa Hoti, <b>Guxim Rrudhani</b>	Enhancing Dam Protection and Stability through Optimized Construction Material Selection in Geotechnical Context.



27	ISCCE_CMCE012	Mirela Balaj, <b>Armend Mujaj</b> , Elsa Alaj, Laur Haxhiu	Comparative Assessment of Glulam Design Methodologies: Finite Element Analysis, Software Tools, and Approximate Formulations
28	ISCCE_CMCE013	Elsa Alaj, Mirela Balaj, Erona Berisha, Plator Kryeziu	Membrane and Bending Behavior of Plates and Shells using FEM approach focusing on Form Finding Concept
29	ISCCE_HFRM002	Elita Ferati, Qëndresa Berisha	Hydrological modeling of the Fersina River
30	ISCCE_SEE007	Egzon Ahmaxhekaj, <b>Armend Mujaj</b> , <b>Anita Gjukaj</b>	Different additional effects appearing from the structural construction stage.
31	ISCCE_CM010	Rina Haxhijaj, Laurant Mustafa, Fisnik Tërshana	Workability Assessment Methods in Beltic Calcium Sulfoaluminate Concrete Mixtures
32	ISCCE_GCPRS009	Ilir Heta, <b>Bashkim Idrizi</b>	Automatic transformation of map projection with QGIS. Case study: RKS's borders in different Map Projections
33	ISCCE_EQM013	Eda Krasniqi	Formaldehyde as an Indoor Pollutant: Origins, Impacts, and Remedial Strategies. A case study of Kosovo
34	ISCCE_SEE011	Butrint Kryeziu, <b>Armend Mujaj</b> , Alban Demiraj, Arton Demiraj	Experimental and Theoretical Investigation into the Behavior of a Reinforced Concrete Beam with Conventional Steel Bars
35	ISCCE_EQM014	Delvina Çollaku	Tackling Indoor Air Pollution in Kosovo: Sources, Impacts, and Mitigation Strategies for Lead
36	ISCCE_GE009	Arda Karaq, Bledar Morina, Era Bërdynaj, Arianit Bricori, Albesa Bajraktari	Structural and Earthquake Engineering
37	ISCCE_CTM006	Yllka Binaku, Arbër Binaku, <b>Esat Gashi</b>	Time Programming and Cost Control in Construction Projects

In the attached annex, you can find all tabular data on all works submitted to ISCCE 2024.



*Annex 1. Full list of works submitted to ISCCE 2024*

<b>No.</b>	<b>Topic</b>	<b>Author</b>	<b>Title of Work</b>	<b>University</b>	<b>Type of Work</b>
1	ISCCE_HCE001	Igli Balla, Oltion Marko	Proposing contemporary measures to prevent the phenomenon of erosion ( Korthpula-Puke)	UPT	Full Paper
2	ISCCE_SEE001	Granit Limani, Armend Mujaj, Valon Veseli	The behavior of flat slabs reinforced concrete structures with different floors, in seismic areas	UP	Full Paper
3	ISCCE_SEE002	Hetem Bimbashi, Armend Mujaj, Guxim Veseli	The structural analysis of the frame and dual systems, a case study of the 10-story structure designed based on capacity	UP	Abstract
4	ISCCE_WWT001	Mikael Lako, Françesko Dërguti, Alfred Lako	Membrane Bioreactor In Wastewater Treatment - Case study: WWTP in the Cement Factory "Antea Titan"	UPT	Full Paper
5	ISCCE_EQM001	Mikael Lako, Endi Biba, Alfred Lako	Education for Waste Management	UPT	Full Paper
6	ISCCE_SEE003	Ylli Murati, Armend Mujaj, Enes Krasniqi	Analysis of Structure Response in the Case of Superstructures Case Study: Superstructure of the Technical Faculties Building	UP	Full Paper
7	ISCCE_CM001	Toni Bakovic, Agathe Robisson, Philipp Preinstorfer, Teresa Liberto	Rheological Characterization of Different Clay Minerals for Sustainable Pourable Clay Concrete	TU Wien	Abstract
8	ISCCE_SEE004	Altina Grajcevc, Armend Mujaj, Labeat Misini	Designing cylindrical silos according to "Eurocode" European standards	UP	Full Paper
9	ISCCE_SEE005	Dren Tahiri, Armend Mujaj, Ilir Canaj	Effect of reducing the vertical stiffens of the seismic walls and their retrofit on the Highrise Building of 24 story	UP	Abstract



10	ISCCE_EQM002	Faze Ukaj	Optimising existing municipal waste management systems: a case study of Deçan	UP	Full Paper
11	ISCCE_ERE001	Xhoana MOLLA, Ilda RUSI	Structural Facades, Case of “Forever Green Tower” in Tirana	Polis	Full Paper
12	ISCCE_CCAM001	Xhoi Malo, Xhuana Skura	Climate Change Effects on the Coastal Line of Albania. Case Study of Durrresi seaside	UPT	Abstract
13	ISCCE_GNSDI001	Dardan Muzaqi , Agon Nimani, Bashkim Idrizi	Utilization of the QGIS Platform with OSGEO for Publishing and Analyzing Geospatial Data of River and Road Networks in the Municipality of Vushtrri	UP	Full Paper
14	ISCCE_CM002	Atdhe Haxhimusa, Vjollca Veseli	“Experimental Analysis of the Structural and Environmental Dynamics of Partial Replacement of Cement with Glass Powder in Concrete”	UP	Full Paper
15	ISCCE_CMCE001	Laur Haxhiu, Mirela Balaj, Endrit Vuniqi	Analysis of Cold-Formed Sections Elements under compression loads: Conventional methods vs Finite Element Approach	UP	Full Paper
16	ISCCE_CTM001	Laur Haxhiu, Agon Shaini, Laurit Hafizi, Afrim Idrizi	Comparative Cost Analysis of Warehouse Construction Using Different Structural Materials	UP	Abstract
17	ISCCE_CM003	Kledia Mehmeti	Alkali Silica Reaction and its Impact on the Durability of Concrete	UP	Full Paper
18	ISCCE_HCE002	Argjenda Shala, Bulza Lika, Melisa Fetahaj, Oltion Marko	Application of the Erosion Potential Method in Lumbardhi i Deçanit Watershed	UP	Full Paper
19	ISCCE_CMCE002	Albin Shehu, Alban Kadiri, Blendi Krasniqi, Mergim Lajqi	Assessing the Load-Bearing Capacity of Frame Systems and increasing it through the application of FRP Techniques	UP	Full Paper
20	ISCCE_CMCE003	Fatlind Musa, Armend Mujaj, Albin Shehu, Mergim Lajqi	Comparative Analysis of Displacement in Dual Systems with Shear Walls: Utilizing Finite Element Method, Software’s, and Approximate Expression	UP	Full Paper



21	ISCCE_GCPRS001	Arli Llabani, Ervin Stena	The integration of Unmanned Aircraft Systems for the 3D surveying of rural areas	UPT	Abstract
22	ISCCE_CCAM002	Denisa Muça, Ledisa Ahmati, Luena Mullaj	Integrating Adaptation and Mitigation Strategies for Climate Resilience and Sustainable Development: Challenges and Opportunities	UPT	Full Paper
23	ISCCE_WWT002	Elita Ferati	Energy Production Through Treating Wastewater	UP	Full Paper
24	ISCCE_CM004	Delara Etezad, Agathe Robisson, Teresa Liberto, Philipp Preinstorfer	Physical and Chemical Characterization of Basalt Fibers	TU Wien	Abstract
25	ISCCE_WWT003	Alketa Bislimi, Marigona Xhini	Impact of Antibiotics in Wastewater Treatment Plants and Optimal Configurations for Kosovo	UP	Abstract
26	ISCCE_EQM003	Donjeta Shabani	Optimizing Waste Management in Gjilan Municipality: Challenges and Solutions	UP	Abstract
27	ISCCE_EQM004	Donjeta Shabani	Navigating Environmental Legislation: A Comparative Analysis of Kosovo and Turkey	UP	Full Paper
28	ISCCE_EQM005	Fjosa Sadikaj	Enhancing Municipal Solid Waste Management: A Case Study of Istog Municipality, Kosovo	UP	Abstract
29	ISCCE_GCPRS002	Bledar Sina, Kledisa Kopaci	Exploring the connection between State Leveling Networks and Tide Gauges for Geodetic and Oceanographic Applications	UPT	Abstract
30	ISCCE_EQM006	Esli Elezi, Aishe Hyka, Kleant Semema	Rehabilitation and Revitalization of Surface Mining Areas through the Integrated Waste Management System for Spoils and Constructions	UPT	Full Paper
31	ISCCE_GCPRS003	Xhesika Hasa	The use of drones in Construction Engineering	KEK	Full Paper
32	ISCCE_CMCE004	Klea Kasa, Huseyin Bilgin	2D vs 3D Models for the Seismic Response Assessment of Reinforced Concrete Buildings	EPOKA	Abstract





33	ISCCE_CMCE005	Bajram Sejdiu, Elsa Alaj, Egzon Morina, Ilirian Haskaj	Advanced Modeling Techniques in Structural Analysis using Finite Element Method	UP	Full Paper
34	ISCCE_EQM007	Hana Puka	Towards Sustainable Waste Management: Challenges, Solutions and Priorities for the Municipality of Prishtina	UP	Full Paper
35	ISCCE_GNSDI002	Agon Nimani, Dardan Muzaqi, Bashkim Idriizi	Potential flood-prone areas identification and mapping using GIS-based multi-criteria decision making and analytical hierarchy process for the territory of Kosovo	UP	Full Paper
36	ISCCE_WWT004	Argjenda Berisha, Rigona Gallapeni, Eglantina Kurtishaj, Elda Bacaj	Advancements in Wastewater Treatment: A Comprehensive Analysis of Technological Processes and Industrial Practices	UP	Abstract
37	ISCCE_ERE002	Arnold Frrokaj	Revitalization of an Old Mine Gallery	UPT	Abstract
38	ISCCE_CMCE006	Alketa Ahmetaj, Vaid Kryeziu, Miftar Alimusaj, Blendi Krasniqi	Optimization of Dimensional Parameters for Structural Elements in Frame Systems	UP	Full Paper
39	ISCCE_GCPRS004	Eduart Blloshmi, Eljon Peka	Implementation and Impact of the CORS Network "GeoNet-Kosova"	UPT	Abstract
40	ISCCE_CCAM003	Era Fusha, Sindi Alliu, Oltion Marko	Carbon Footprint and Carbon Emission Reduction of Higher Education Institution Buildings: Case of Faculty of Civil Engineering Building, Tirana	UPT	Full Paper
41	ISCCE_CCAM004	Sindi Alliu, Era Fusha, Entela Çobani	Building the Resilience of Protected Areas to Climate Change, Case Study Protected Area Baks Rrjoll, Shkoder	UPT	Full Paper
42	ISCCE_GCPRS005	Jonida Rafuna, Aroma Sylhasi, Ymer Kuka	Creation of a tourist map using GIS applications for the municipality of Gjakova	UP	Full Paper
43	ISCCE_CMCE007	Tuana Yilmaz, Hivda Elci, Mehmet Enes Daglioglu, Andrea Lapa, Murat Yilmaz	Implementation of Partial Fixities Using Existing Stiffness Equations in Finite Element Models	ITU	Full Paper



44	ISCCE_CMCE008	Ardijan Shala, Dritan Lajci, Mensur Pali, Alban Kadiri	Analysis of vertical structural elements for varying class of ductility in Dual Systems with Shear Walls: Utilizing seismic design standards, specifically Eurocode 8	UP	Full Paper
45	ISCCE_GCPRS006	Aroma Sylhasi, Jonida Rafuna, Ymer Kuka	Land coverage and the changes occurred between years 2006 and 2018 - case study Gjakova Municipality	UP	Full Paper
46	ISCCE_CCAM005	Argjenda Shala, Bulza Lika, Melisa Fetahaj	Climate Change: Effects, Contributors and Actions Taken - Case Studies of Kosovo and Japan	UP	Abstract
47	ISCCE_ERE003	Elif Simsek, Fatmaelzahraa Matar, Ali Sari, Alif Altunsi, Onur Gunes	Analysis and Design of 5-MW Onshore Wind Turbine Under Wind Load	ITU	Full Paper
48	ISCCE_HFRM001	Dorea Deda	Water Management Systems: State of Water, Challenges and Usage in Kosovo	UP	Abstract
49	ISCCE_CCAM006	Dorea Deda	Climate Change Effects, Contributors and Measures: A Case Study of India and Kosovo	UP	Full Paper
50	ISCCE_CM005	Muhammad Shahid, Bernhard Pichler, Agathe Robisson	Understanding the eight-channel isothermal calorimeter and its outcomes	TU Wien	Abstract
51	ISCCE_HMB001	Erta Kushta	Application of Geodetic Technologies in the preservation of Butrint Archeologic Site	UPT	Abstract
52	ISCCE_CM006	Subhransu Dhar, Eduardo Machado-Charry, Teresa Liberto, Robert Schennach, Agathe Robisson	Spherical balls settling through a quiescent cement paste	TU Wien	Abstract
53	ISCCE_CM007	Dana Daneshvar Philipp Preinstrofer, Karl Deix, Behrouz Shafei, Agathe Robisson	Characterization of Restrained Shrinkage in UHPC-NC Composites Using a Distributed Fiber Optic Sensing System	TU Wien	Abstract
54	ISCCE_SEE006	Nertila Kongjoni, Neritan Shkodrani	The Chronology and Post Fire Effects on General Medicine Hospital Building, Tirana University Hospital Center	UPT	Full Paper



55	ISCCE_EQM008	Orjada Ngjeliu, Teida Shehi, Konalsi Gjoka	Principles of Circular Economy as an instrument to increase the environmental responsibility of businesses	UPT	Full Paper
56	ISCCE_ERE004	Gloria Ikonomi, Enxhi Qershia, Teida Shehi	Embracing energy efficiency processes for a neighborhood building	UPT	Full Paper
57	ISCCE_GNSDI003	Clirim PODVORICA, , Bashkim Idrizi	Developing and usage of Mobile GIS Applications	UP	Full Paper
58	ISCCE_CM008	Ard Piraj, Sadik Veseli	Improvement of the properties of concrete with fibers addition	UP	Full Paper
59	ISCCE_CCAM007	Kristjana Omeri, Vlorlinda Daja, Teida Shehi, Konalsi Gjoka	Climate change impacts on different stages of waste management system	UPT	Full Paper
60	ISCCE_ERE005	Teida Shehi, Enkelejda Gjinali, Konalsi Gjoka	Moving toward a Circular and Sustainable Energy Paradigm	UPT	Full Paper
61	ISCCE_CTM002	Monica Santamaria-Ariza, José C. Matos	Applying concepts of Reliability, Risk, and Resilience on the Management of Civil Infrastructures	UMinho	Full Paper
62	ISCCE_CCAM008	Lis Bytyqi	Climate Change: Effects, Contributors and Actions Taken - Case Studies of Kosovo and Germany	UP	Full Paper
63	ISCCE_CTM003	Fjona Ferati, Marin Malotaj, Ibiana Muca, Mateo Qyra	The silent struggle of mental, physical and emotional health in the construction industry	UPT	Full Paper
64	ISCCE_CTM004	Boran Minxhozi, Sait Gjoka	From Drafting Tables to Digital Models: The Revolution of Civil Engineering in Albania	UPT	Full Paper
65	ISCCE_CMCE009	Arta Ramadani, Bardha Isufi	Potential of Double Skin Façades	UP	Abstract
66	ISCCE_GCPRS007	Lukáš Běloch	Types of Mobile Mapping Approaches Compared to Static Terrestrial Scanning	CTU	Full Paper
67	ISCCE_CTM005	Aurela Xhelili, Ledi Bello	Concrete Saving New Technology U-BOOT SLABS	UPT	Full Paper





68	ISCCE_ERE006	Alketa Suka, Gonje Luzhnica	Integration of Renewable Energy in Urban Environments	UP	Full Paper
69	ISCCE_EQM009	Edacan Kulak, Elif Altınçekiç	Green Buildings	ITU	Full Paper
70	ISCCE_GCPRS008	Festina Sadiku	Visualization of Landscape Changes in a 3D Environment Using the Storytelling Approach	UP	Abstract
71	ISCCE_GE001	Ndalesa Hoti, Guxim Rrudhani	Enhancing Dam Protection and Stability through Optimized Construction Material Selection in Geotechnical Context.	UP	Full Paper
72	ISCCE_GE002	Besmira Bushaj, Ornela Bic, Brunilda Metkaj, Eliota Merollari	A case study or probabilistic laboratory of soil liquefaction	UPT	Full Paper
73	ISCCE_GE003	Brunilda Metkaj, Ornela BicI, Eliota MerollarI, Besmira Bushaj	Comparison Between Static Cone Penetration Test and Borehole	UPT	Abstract
74	ISCCE_EQM010	Adjela Nasufi, Antonela Perndojaj	Sustainable Solutions Exploring Eco-Friendly Building Materials	UPT	Full Paper
75	ISCCE_HCE003	Erëzana Qarkaxhija Vela	Impact of Sustainable Urban Drainage Systems on Stormwater Management: A Case Study of the Mat Neighborhood in Prishtina, Kosovo	CULC (Prague)	Abstract
76	ISCCE_CMCE010	Alba Rexhaj, Luan Murtaj	The Debut of Base Isolators in Albania	UPT	Full Paper
77	ISCCE_HMB002	Ibiana Muça, Mateo Qyra, Fjona Ferati, Marin Malotaj	The Restoration and Preservation of Albania's Mati Bridge	UPT	Full Paper
78	ISCCE_CMCE011	Mirela Balaj, Laur Haxhiu, Vlora Shatri, Bajram Shefkiu	An analysis of (group and individual) Tensioning Techniques in Posttensioned Concrete, Mechanical Insights and Practical Implications	UP	Abstract
79	ISCCE_HMB004	Dafina Balaj, Era Tytyri, Tringa Rama	History of Architecture Renaissance to Modern, British Museum London by Robert Smirke	UP	Abstract



80	ISCCE_GE004	Renato Gjinaj, Dritan Gjegjaj	General limit equilibrium analysis in 2d and 3d of a large landslide in Italian Alps	UPT	Full Paper
81	ISCCE_CMCE012	Mirela Balaj, Armend Mujaj, Elsa Alaj, Laur Haxhiu	Comparative Assessment of Glulam Design Methodologies: Finite Element Analysis, Software Tools, and Approximate Formulations	UP	Full Paper
82	ISCCE_CMCE013	Elsa Alaj, Mirela Balaj, Erona Berisha, Plator Kryeziu	Membrane and Bending Behavior of Plates and Shells using FEM approach focusing on Form Finding Concept	UP	Full Paper
83	ISCCE_HMB003	Fatjon Valteri, Indrit Koka, Liljana Troci	Gjirokastra: A Heritage Preservation Perspective	UPT	Full Paper
84	ISCCE_HFRM002	Elita Ferati, , Qëndresa Berisha	Hydrological modeling of the Fersina River	UP	Full Paper
85	ISCCE_TE001	Eneida Meçi, Xhulian Kërkoti	Evolution of materials movement: A journey through construction transportation innovations	UPT	Full Paper
86	ISCCE_CCAM009	Euerda Asllani, Olta Lushaj, Dr. Entela Çobani	Strategies for mitigation and adaptation of climate change	UPT	Full Paper
87	ISCCE_CMCE014	Fisnik Tërshana, Arbëresha Kabashaj	INFLUENCE OF MOISTURE CONTENT ON PHYSICAL AND MECHANICAL PROPERTIES OF WOOD IN CONSTRUCTIONS	UP	Abstract
88	ISCCE_EQM011	Ammar Ahmad, Marco Ciolli	DEFORESTATION IN PAKISTAN: AN OVERVIEW OF CAUSES & IMPACTS	UT (Trento)	Full Paper
89	ISCCE_EQM012	Grid Fortuzi, Roland Çera, Kleant Semema	Integrated Network of Collection and Transportation of Construction and Demolition Waste	UPT	Full Paper
90	ISCCE_CM009	Eri Vokshi	Design Requirements and Applications when Considering Structural Strengthening with FRP Composites	Sika Corporation	Abstract
91	ISCCE_SEE007	Egzon Ahmaxhekaj, Armend Mujaj, Anita Gjukaj	Different additional effects appearing from the structural construction stage.	UP	Full Paper



92	ISCCE_CM010	Rina Haxhijaj, Laurant Mustafa, Fisnik Tërshana	Workability Assessment Methods in Beltic Calcium Sulfoaluminate Concrete Mixtures	UP	Full Paper
93	ISCCE_GCPRS009	Ilir Heta, , Bashkim Idrizi	Automatic transformation of map projection with QGIS. Case study: RKS's borders in different Map Projections	UP	Full Paper
94	ISCCE_CMCE015	Anisa Cenaj, Marsed Leti	AutoCAD Scripting for Efficient Spatial Design and Drafting	EPOKA	Full Paper
95	ISCCE_HMB005	Adriana Hamzoviç, Blendiona Bytyqi	ARCHITECTURE OF RESTAURANTS AND CAFES IN PRISTINA	UP	Abstract
96	ISCCE_HMB006	Besianë Kastrati, Natyra Krasniqi, Nora Spahiu, Riga Isufi	History of Architecture Renaissance to Modern, Baroque in Austria, XVIII century – Lucas Von Hildebrandt, Belvedere Palace, Vienna	UP	Abstract
97	ISCCE_SEE008	Marsed Leti, Gledis Shuaipi, Joana Biba	Assessing the Seismic Performance of a Communist-Era Albanian Residential Building Using Nonlinear Static and Dynamic Analyses	EPOKA	Full Paper
98	ISCCE_SEE009	Marsed Leti, Gerta Isufaj	A Practical Guide to Incremental Dynamic Analysis for a Premodern Reinforced Concrete Building Template in Albania	EPOKA	Full Paper
99	ISCCE_WWT005	Orgest Shehi	Comprehensive Analysis of Wastewater Treatment Processes and Environmental Impacts: A Case Study of Tirana Water Treatment Plant	UPT	Full Paper
100	ISCCE_GE006	Alesia Daja	Evidence of soil liquefaction and impacts on infrastructure following the 2019 earthquake in Albania: A case study in Durres and Lalëzi bays	UPT	Full Paper
101	ISCCE_GNSDI004	Endrit Krasniqi	Building a database in GeoServer in function of creating a Webmap	UP	Abstract
102	ISCCE_SEE010	Elton Aliu, Albion Sylaj, Valon Veseli	Program of Works for the multi-store Building B+P+5, method used: Gant Chart and Pert Chart	UP	Abstract



103	ISCCE_EQM013	Eda Krasniqi	Formaldehyde as an Indoor Pollutant: Origins, Impacts, and Remedial Strategies. A case study of Kosovo	UP	Full Paper
104	ISCCE_SEE011	Butrint Kryeziu, Armend Mujaj, Alban Demiraj, Arton Demiraj	Experimental and Theoretical Investigation into the Behavior of a Reinforced Concrete Beam with Conventional Steel Bars	UP	Full Paper
105	ISCCE_GE007	Laurant Mustafa, Fisnik Tërshana, Rina Haxhijaj, Ermir Kurtaj	Compaction of Cohesive and Granular Soils	UP	Abstract
106	ISCCE_HFRM003	Leunora Bala	Sustainable Water Resource Management in Albania	UPT	Full Paper
107	ISCCE_GE008	Kemal Edip, Vlatko Sheshov, Julijana Bojadjieva, Aleksandra Bogdanovic4	Advanced numerical simulations of geotechnical challenges	IZIIS	Full Paper
108	ISCCE_EQM014	Delvina Çollaku	Tackling Indoor Air Pollution in Kosovo: Sources, Impacts, and Mitigation Strategies for Lead	UP	Full Paper
109	ISCCE_GE009	Arda Karaq, Bledar Morina, Era Bërdynaj, Arianit Bricori, Albesa Bajraktari	Structural and Earthquake Engineering	UP	Full Paper
110	ISCCE_WWT006	Jera Xhelilaj, Kristilda Lala	Use of Activated Carbon for Drinking Water Treatment Case study: Bovilla Water Supply and Purification Plant	UPT	Full Paper
111	ISCCE_HCE004	Isabel Hoxhaj	EXPLORING THE DESIGN AND EFFECTIVENESS OF NATURE- INSPIRED WAVE BREAKERS FOR COASTAL PROTECTION	UPT	Full Paper
112	ISCCE_CTM006	Yllka Binaku, Arbër Binaku, Dr. Esat Gashi	Time Programming and Cost Control in Construction Projects	UP	Full Paper





113	ISCCE_CM011	Meriton Ramizi*, Johannes Kirnbauer, Agathe Robisson	Impact of Aging and Storage on Wood Chips for Cement Binding Particle Boards: Exploring Hydration Kinetics of Cement	TU Wien	Abstract
114	ISCCE_CMCE016	Ardian Bytyci	Practical deformation determination of slim floor constructions with the total cross-section method	Uni Stuttgart	Abstract
115	ISCCE_SEE012	Klajdi Dymishi	Reliability analysis of factor of safety in retaining walls reinforced with geogrids or geotextiles.	UPT	Full Paper
116	ISCCE_GE005	Elisa Mehmeti	The importance of engineering measures for the prevention of landslides caused by human activity in the area of Cfaka, Gjirokaster	UPT	Full Paper





**ISCCE 2024**

**International Students Conference of Civil Engineering**  
Prishtina 2024